



**THE SCHOOL BOARD OF BROWARD COUNTY, FLORIDA
2017-2018 ORGANIZATIONAL CHART**

Board Approved All Staff Reappointments: 06/27/17



THE SCHOOL BOARD OF BROWARD COUNTY, FLORIDA

2017-2018 ORGANIZATIONAL CHART

School Board Appointed Committees & Public Stakeholders	1
Superintendent of Schools/General Counsel	2
Chief School Performance & Accountability Officer	3
Chief Academic Officer	4-7
Early Learning & Language Acquisition	4
Exceptional Student Education & Support	5
Instruction & Interventions	6
Student Support Initiatives	7
Chief Auditor	8
Chief Facilities Officer	9
Chief Financial Officer	10
Chief Human Resources & Equity Officer	11
Chief Information Officer	12
Chief Portfolio Services Officer	13
Chief Public Information Officer	14
Chief of Staff	15
Chief Strategy & Operations Officer	16-17
Broward Education Foundation, Business Support Center, Grants Administration, Strategic Implementation & Accountability	16
Food & Nutrition Services, Procurement & Warehousing Services, Student Transportation & Fleet Services	17



SCHOOL BOARD APPOINTED COMMITTEES & PUBLIC STAKEHOLDERS

THE SCHOOL BOARD OF BROWARD COUNTY, FL 2017-2018 ORGANIZATIONAL CHART

Legend

Funding from sources other than General Funds N	New Position Job Description Exists N	Reporting Change from Different Division R
New Position Job Description Does Not Exist N ✓	Job Study on Existing Position ✍	Alignment Change within same Division A
Revision to Existing Job Description/Title Change ✓		

Funding:

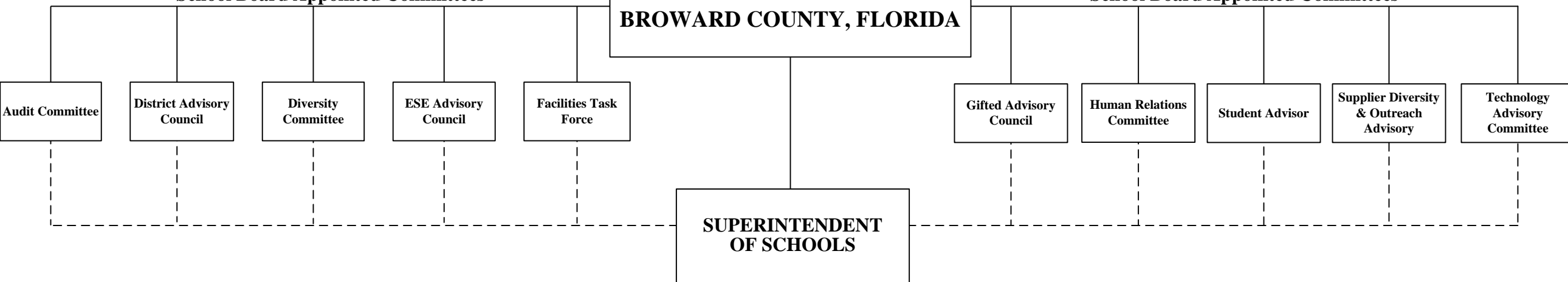
C Capital	FS Food Service	<u>Direct Report</u>
G General	Gr Grant	<u>Indirect Report</u>

**BROWARD COUNTY
COMMUNITY**

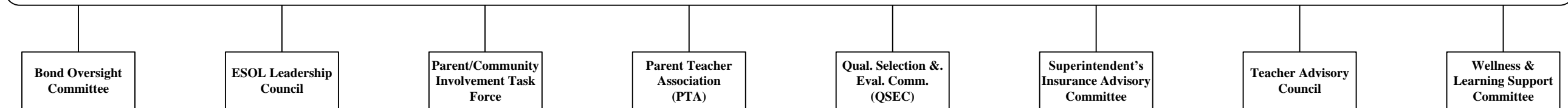
**THE SCHOOL BOARD OF
BROWARD COUNTY, FLORIDA**

School Board Appointed Committees

School Board Appointed Committees



PUBLIC STAKEHOLDERS





THE SCHOOL BOARD OF BROWARD COUNTY, FL
2017-2018 ORGANIZATIONAL CHART

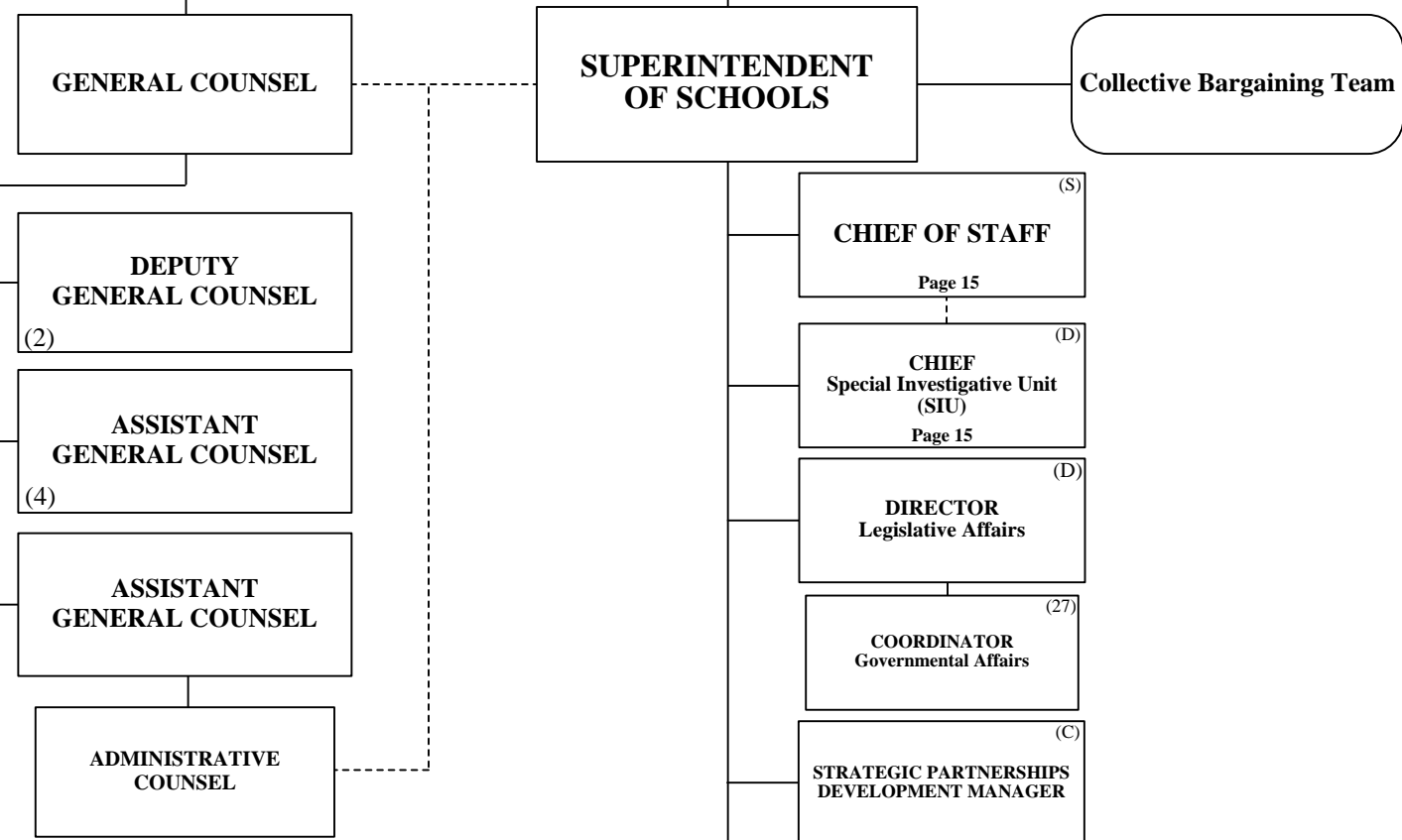
SUPERINTENDENT/GENERAL COUNSEL

**BROWARD COUNTY
COMMUNITY**

**THE SCHOOL BOARD OF
BROWARD COUNTY, FLORIDA**

Legend

Funding from sources other than General Funds	New Position Job Description Exists N	Reporting Change from Different Division R
New Position Job Description Does Not Exist N	Job Study on Existing Position J	Alignment Change within same Division A
Revision to Existing Job Description/Title Change ✓	Funding: C Capital FS Food Service D Direct Report G General Gr Grant I Indirect Report	



- CHIEF SCHOOL PERFORMANCE & ACCOUNTABILITY OFFICER
Page 3
- CHIEF ACADEMIC OFFICER
Pages 4-7
- CHIEF AUDITOR
Page 8
- CHIEF FACILITIES OFFICER
Page 9
- CHIEF FINANCIAL OFFICER
Page 10
- CHIEF HUMAN RESOURCES & EQUITY OFFICER
Page 11
- CHIEF INFORMATION OFFICER
Page 12
- CHIEF PORTFOLIO SERVICES OFFICER
Page 13
- CHIEF PUBLIC INFORMATION OFFICER
Page 14
- CHIEF STRATEGY & OPERATIONS OFFICER
Pages 16-17

Funding from sources other than General Funds

- C** Capital **FS** Food Service
- G** General **Gr** Grant



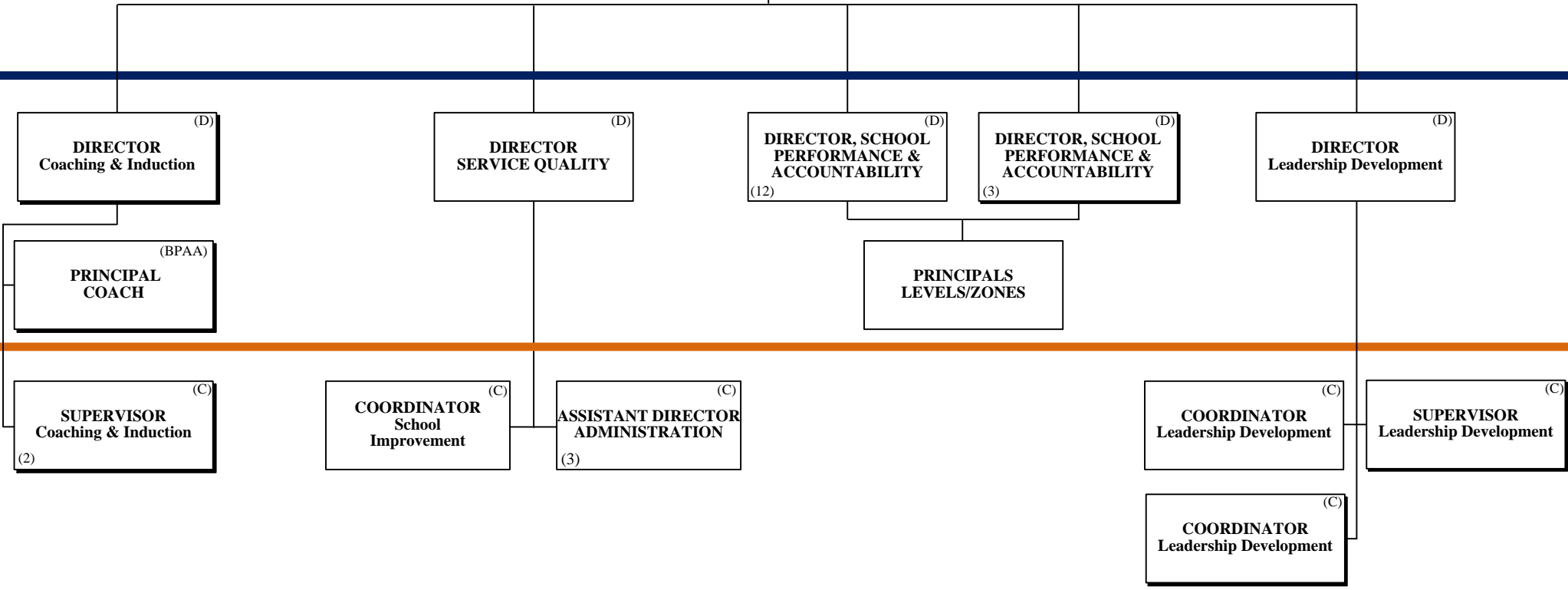
SCHOOL PERFORMANCE & ACCOUNTABILITY OSPA

**THE SCHOOL BOARD OF BROWARD COUNTY, FL
2017-2018 ORGANIZATIONAL CHART**

THE SCHOOL BOARD OF BROWARD COUNTY, FLORIDA

SUPERINTENDENT OF SCHOOLS

CHIEF SCHOOL PERFORMANCE & ACCOUNTABILITY OFFICER (S)



PAY BANDS 'S' & 'E'

PAY BAND 'D'

PAY BANDS 'C' & 'B'

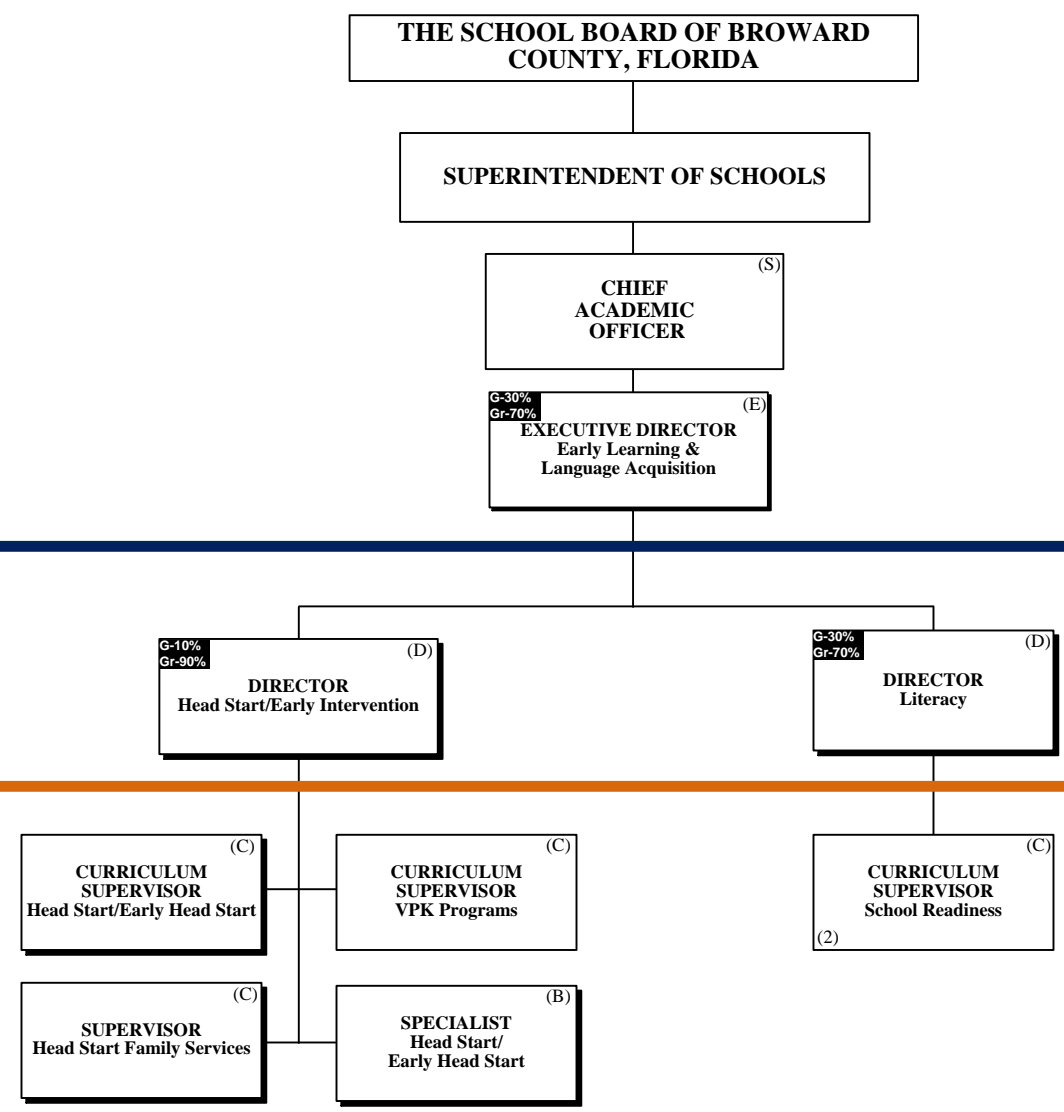
Funding from sources other than General Funds

C Capital **FS** Food Service
G General **Gr** Grant

ACADEMICS EARLY LEARNING & LANGUAGE ACQUISITION



**THE SCHOOL BOARD OF BROWARD COUNTY, FL
 2017-2018 ORGANIZATIONAL CHART**



PAY BANDS 'S' & 'E'

PAY BAND 'D'

PAY BANDS 'C' & 'B'

ACADEMICS EXCEPTIONAL STUDENT LEARNING SUPPORT



**THE SCHOOL BOARD OF BROWARD COUNTY, FL
2017-2018 ORGANIZATIONAL CHART**

Funding from sources other than General Funds

C Capital **FS** Food Service
G General **Gr** Grant

THE SCHOOL BOARD OF BROWARD COUNTY, FLORIDA

SUPERINTENDENT OF SCHOOLS

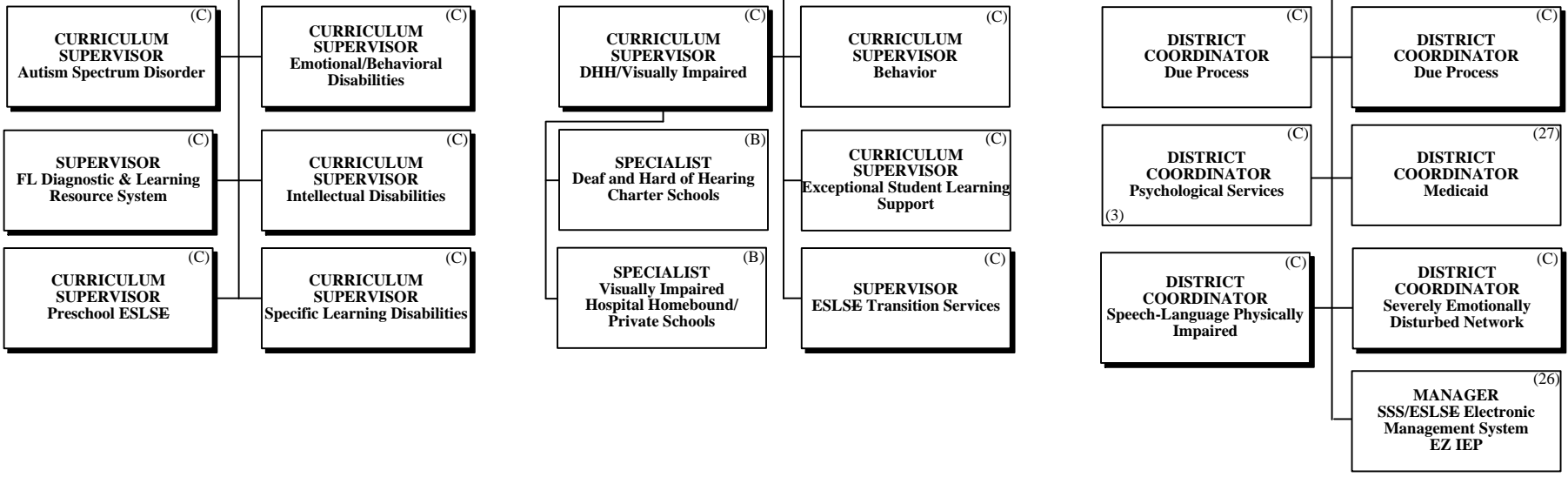
CHIEF ACADEMIC OFFICER ^(S)

EXECUTIVE DIRECTOR
Exceptional Student Learning Support ^(E)

PAY BANDS 'S' & 'E'

DIRECTOR ^(D) Exceptional Student Learning Support (Pre-K/Elementary)
 DIRECTOR ^(D) Exceptional Student Learning Support (Secondary)
 DIRECTOR ^(D) Exceptional Student Learning Support Services

PAY BAND 'D'



PAY BANDS 'C' & 'B'



ACADEMICS INSTRUCTION & INTERVENTIONS

THE SCHOOL BOARD OF BROWARD COUNTY, FL 2017-2018 ORGANIZATIONAL CHART

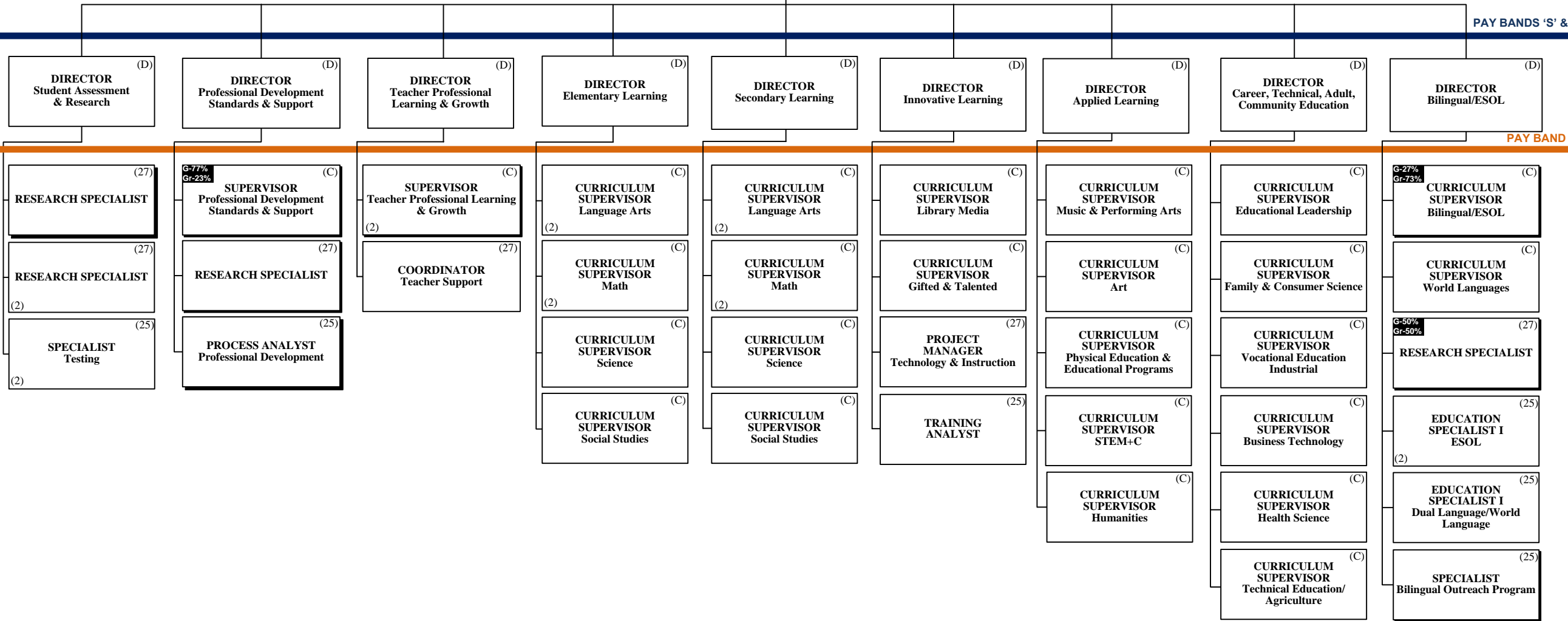
Funding from sources other than General Funds

C Capital **FS** Food Service
G General **Gr** Grant

THE SCHOOL BOARD OF BROWARD COUNTY, FLORIDA

SUPERINTENDENT OF SCHOOLS

CHIEF ACADEMIC OFFICER (S)





ACADEMICS STUDENT SUPPORT INITIATIVES

THE SCHOOL BOARD OF BROWARD COUNTY, FL
2017-2018 ORGANIZATIONAL CHART

Funding from sources other than General Funds

C Capital **FS** Food Service
G General **Gr** Grant

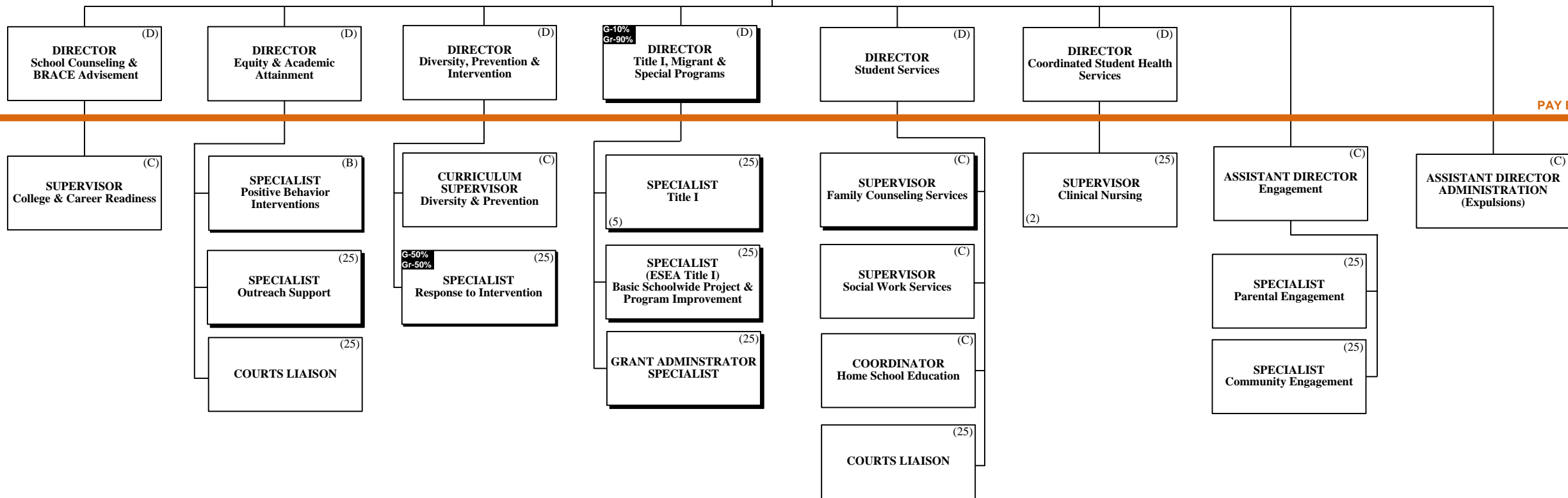
THE SCHOOL BOARD OF
BROWARD COUNTY, FLORIDA

SUPERINTENDENT OF SCHOOLS

CHIEF
ACADEMIC
OFFICER (S)

EXECUTIVE DIRECTOR
Student Support Initiatives (E)

PAY BANDS 'S' & 'E'



PAY BAND 'D'

PAY BANDS 'C' & 'B'

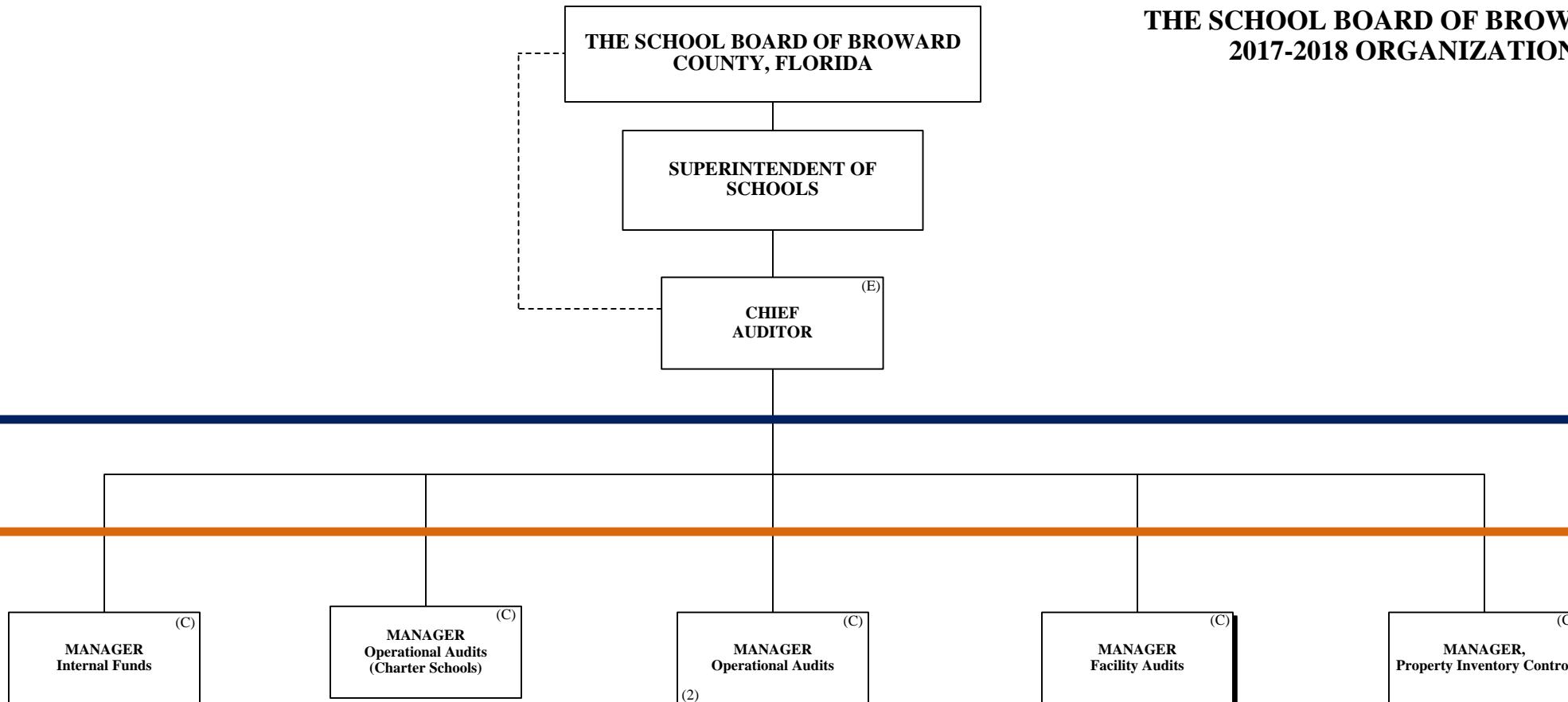


**THE SCHOOL BOARD OF BROWARD COUNTY, FL
2017-2018 ORGANIZATIONAL CHART**

AUDITOR

Funding from sources other than General Funds

- C** Capital **FS** Food Service
- G** General **Gr** Grant



PAY BANDS 'S' & 'E'

PAY BAND 'D'

PAY BANDS 'C' & 'B'

FACILITIES



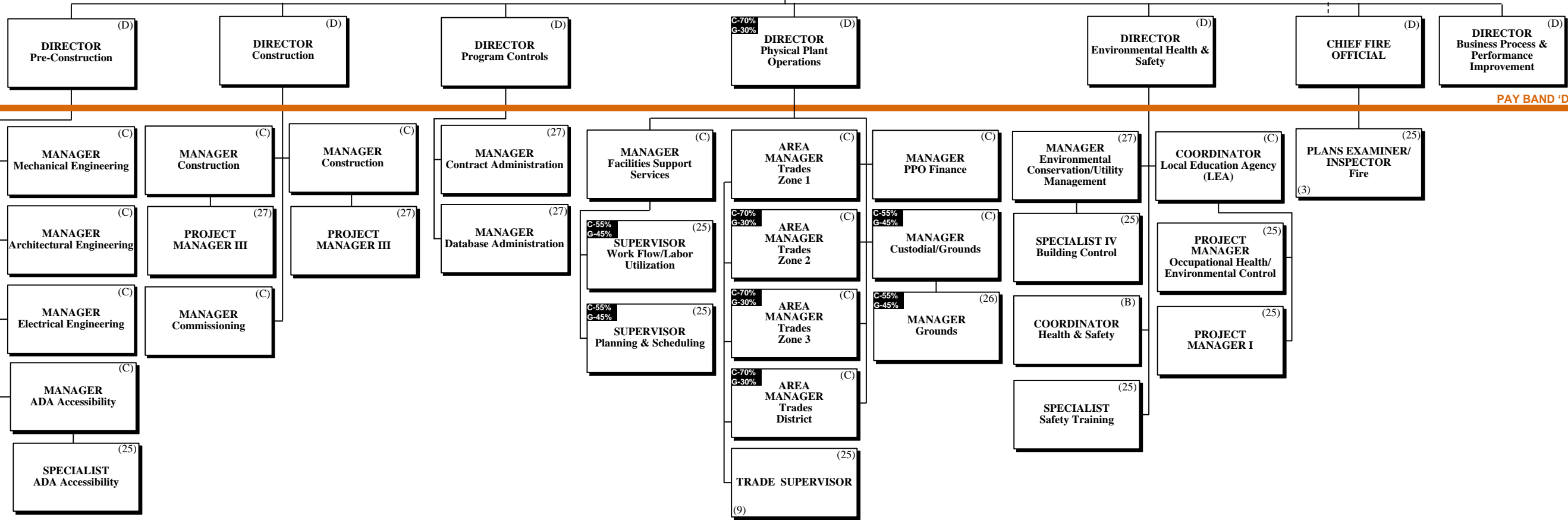
THE SCHOOL BOARD OF BROWARD COUNTY, FLORIDA

THE SCHOOL BOARD OF BROWARD COUNTY, FL
2017-2018 ORGANIZATIONAL CHART

SUPERINTENDENT OF SCHOOLS

CHIEF FACILITIES OFFICER (S)

PAY BANDS 'S' & 'E'



PAY BAND 'D'

ESMAB PAY BANDS 'C' & 'B'
TSP PAY GRADES 25-28

Funding from sources other than General Funds

C Capital **FS** Food Service
G General **Gr** Grant

FINANCIAL MANAGEMENT

THE SCHOOL BOARD OF BROWARD COUNTY, FLORIDA

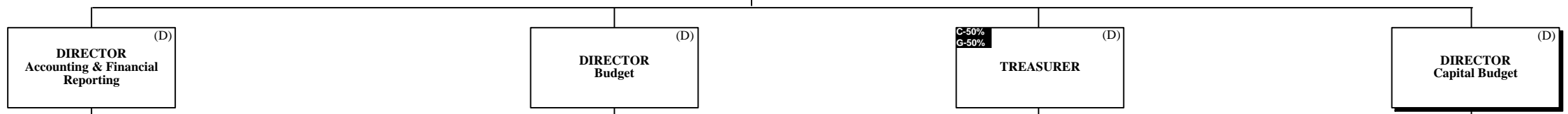


THE SCHOOL BOARD OF BROWARD COUNTY, FL 2017-2018 ORGANIZATIONAL CHART

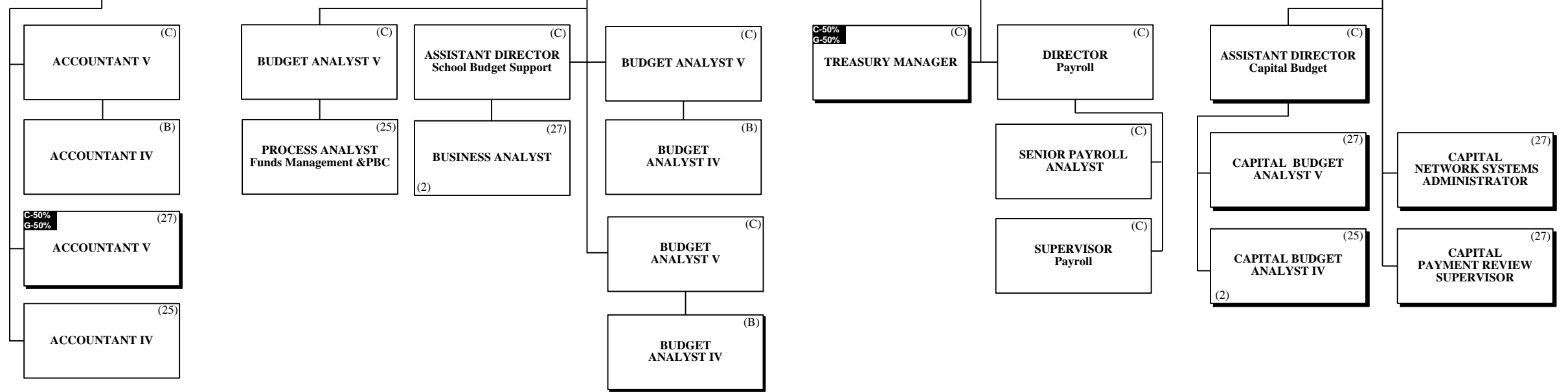
SUPERINTENDENT OF SCHOOLS

C-20%
G-80% (S)
CHIEF FINANCIAL OFFICER (CFO)

PAY BANDS 'S' & 'E'



PAY BAND 'D'



ESMAB PAY BANDS 'C' & 'B'
TSP PAY GRADES 25-28

HUMAN RESOURCES & EQUITY

THE SCHOOL BOARD OF BROWARD COUNTY, FLORIDA



THE SCHOOL BOARD OF BROWARD COUNTY, FL 2017-2018 ORGANIZATIONAL CHART

Funding from sources other than General Funds

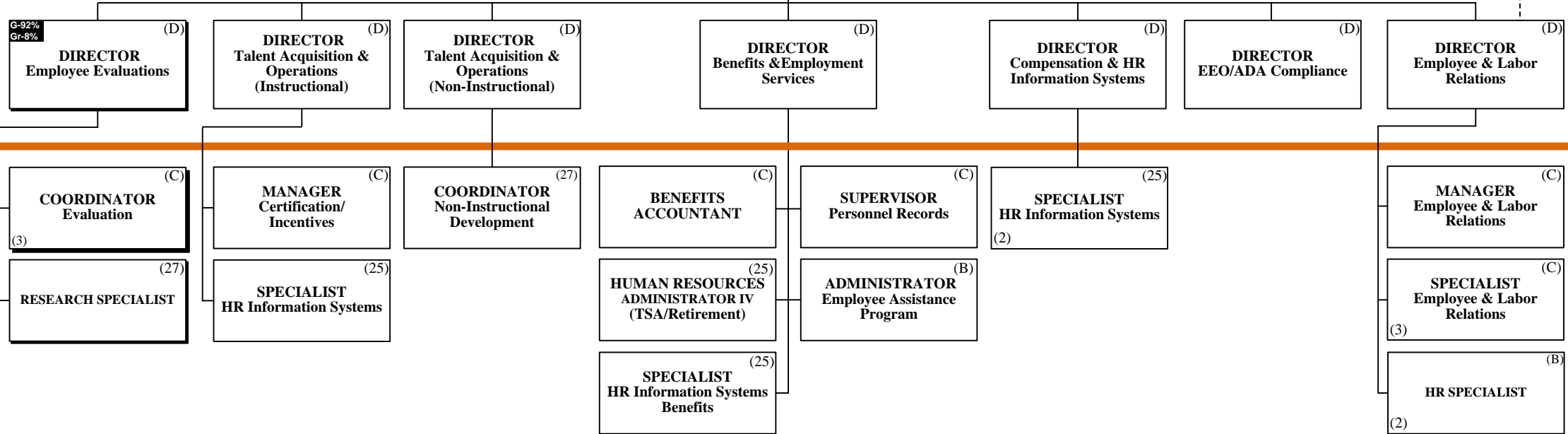
C Capital **FS** Food Service
G General **Gr** Grant

SUPERINTENDENT OF SCHOOLS

CHIEF HUMAN RESOURCES & EQUITY OFFICER (S)

Collective Bargaining

PAY BANDS 'S' & 'E'



PAY BAND 'D'

ESMAB PAY BANDS 'C' & 'B'
TSP/PBA PAY GRADES 25-28

Funding from sources other than General Funds

C Capital **FS** Food Service
G General **Gr** Grant

INFORMATION & TECHNOLOGY



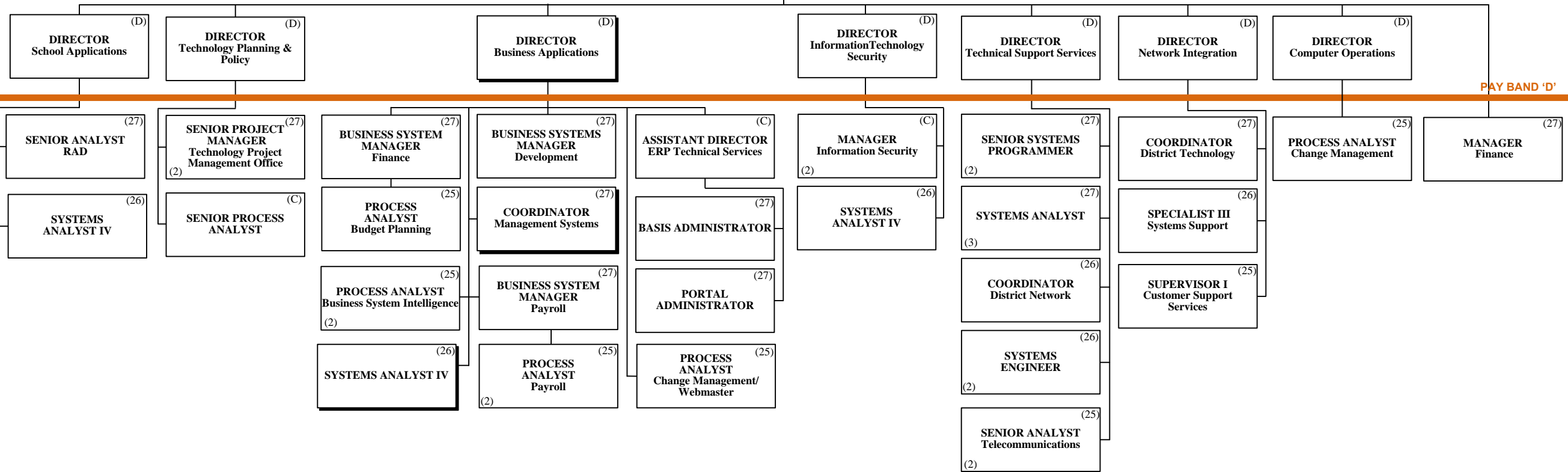
THE SCHOOL BOARD OF BROWARD COUNTY, FL 2017-2018 ORGANIZATIONAL CHART

THE SCHOOL BOARD OF BROWARD COUNTY, FLORIDA

SUPERINTENDENT OF SCHOOLS

CHIEF INFORMATION OFFICER (S)

PAY BANDS 'S' & 'E'



PAY BAND 'D'

ESMAB PAY BANDS 'C' & 'B'
TSP PAY GRADES 25-28

Funding from sources other than General Funds

- C** Capital **FS** Food Service
- G** General **Gr** Grant



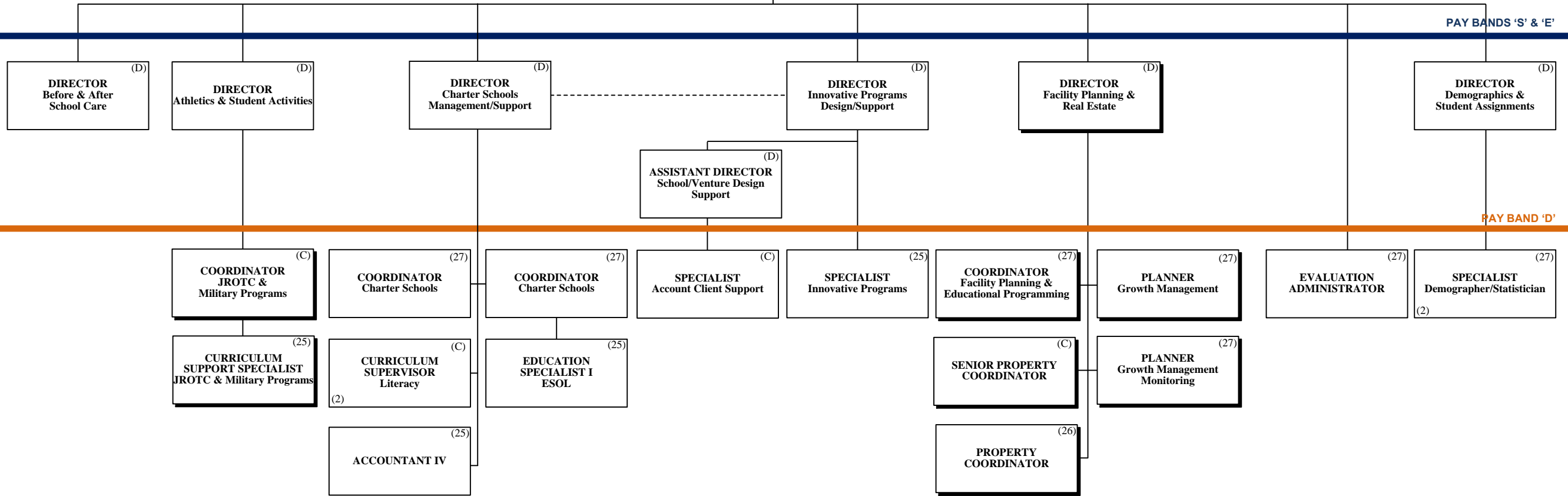
PORTFOLIO SERVICES

THE SCHOOL BOARD OF BROWARD COUNTY, FL 2017-2018 ORGANIZATIONAL CHART

THE SCHOOL BOARD OF BROWARD COUNTY, FLORIDA

SUPERINTENDENT OF SCHOOLS

CHIEF PORTFOLIO SERVICES OFFICER ^(E)



PAY BANDS 'S' & 'E'

PAY BAND 'D'

ESMAB PAY BANDS 'C' & 'B'
TSP PAY GRADES 25-28

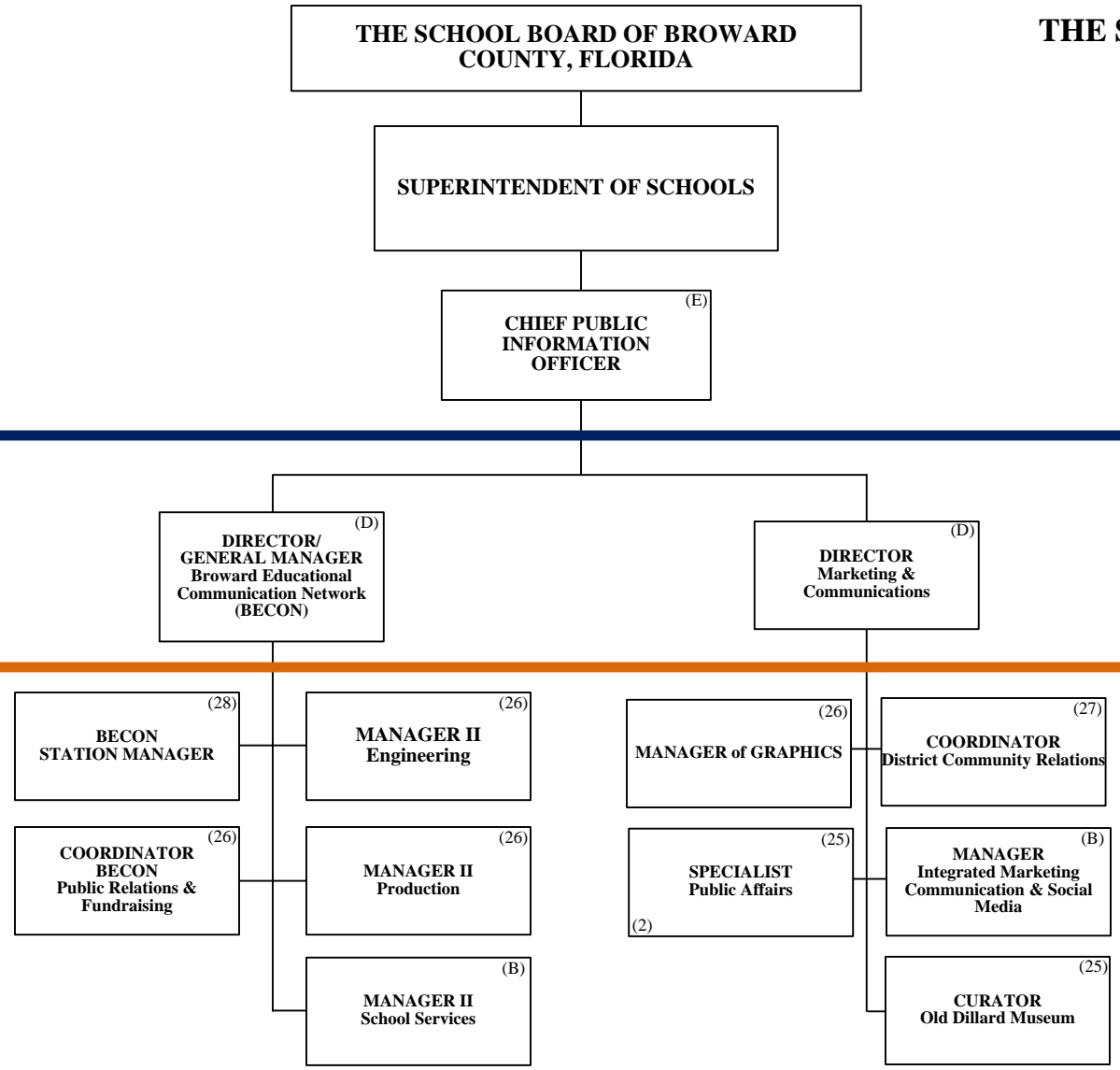
Funding from sources other than General Funds

- C** Capital **FS** Food Service
- G** General **Gr** Grant



PUBLIC INFORMATION OFFICER

THE SCHOOL BOARD OF BROWARD COUNTY, FL 2017-2018 ORGANIZATIONAL CHART



PAY BANDS 'S' & 'E'

PAY BAND 'D'

ESMAB PAY BANDS 'C' & 'B'
TSP PAY GRADES 25-28

CHIEF OF STAFF



THE SCHOOL BOARD OF BROWARD COUNTY, FLORIDA

THE SCHOOL BOARD OF BROWARD COUNTY, FL 2017-2018 ORGANIZATIONAL CHART

Funding from sources other than General Funds

C Capital **FS** Food Service
G General **Gr** Grant

SUPERINTENDENT OF SCHOOLS

CHIEF OF STAFF (S)

PAY BANDS 'S' & 'E'

CHIEF Special Investigative Unit (SIU) (D)

CHIEF BUILDING OFFICIAL (D)

DIRECTOR Risk Management (D)

MAJOR SIU Operations/ Investigations (D)

PAY BAND 'D'

MANAGER II Administrative Support (B)

ASSISTANT CHIEF BUILDING OFFICIAL Inspections (27)

SENIOR ENGINEER (27)

MANAGER Emergency Management (B)

PROGRAM ADMINISTRATOR Workers Compensation (C)

PERSONNEL ADMINISTRATOR Professional Standards (C)

DETECTIVE SIU (Schools) (25)

PLANS EXAMINER/INSPECTOR Building (25)
(6)

PLANS EXAMINER/INSPECTOR Plumbing (25)
(2)

SENIOR PLANS EXAMINER (26)

MANAGER Workers Compensation Claims (C)

MANAGER Workers Compensation Medical Consumerism (C)

MANAGER Workers Compensation Information Analytics (B)

DETECTIVE SIU (Personnel) (25)
(9)

PLANS EXAMINER/INSPECTOR Mechanical (25)
(2)

PLANS EXAMINER/INSPECTOR Electrical (25)
(2)

SENIOR PLANS EXAMINER Mechanical (26)

SUPERVISOR Workers Compensation Claims (B)

SUPERVISOR Workers Compensation Medical Case Management (B)

SPECIALIST Workers Compensation Stay-at-Work/Return-to-Work (B)

SCHOOL SAFETY COORDINATOR (25)

PLANS EXAMINER/INSPECTOR Roofing (25)
(2)

ADJUSTER Workers Compensation Claims (B)
(8)

CASE MANAGER Workers Compensation Medical Case (B)
(8)

ESMAB PAY BANDS 'C' & 'B'
TSP PAY GRADES 25-28

STRATEGY & OPERATIONS

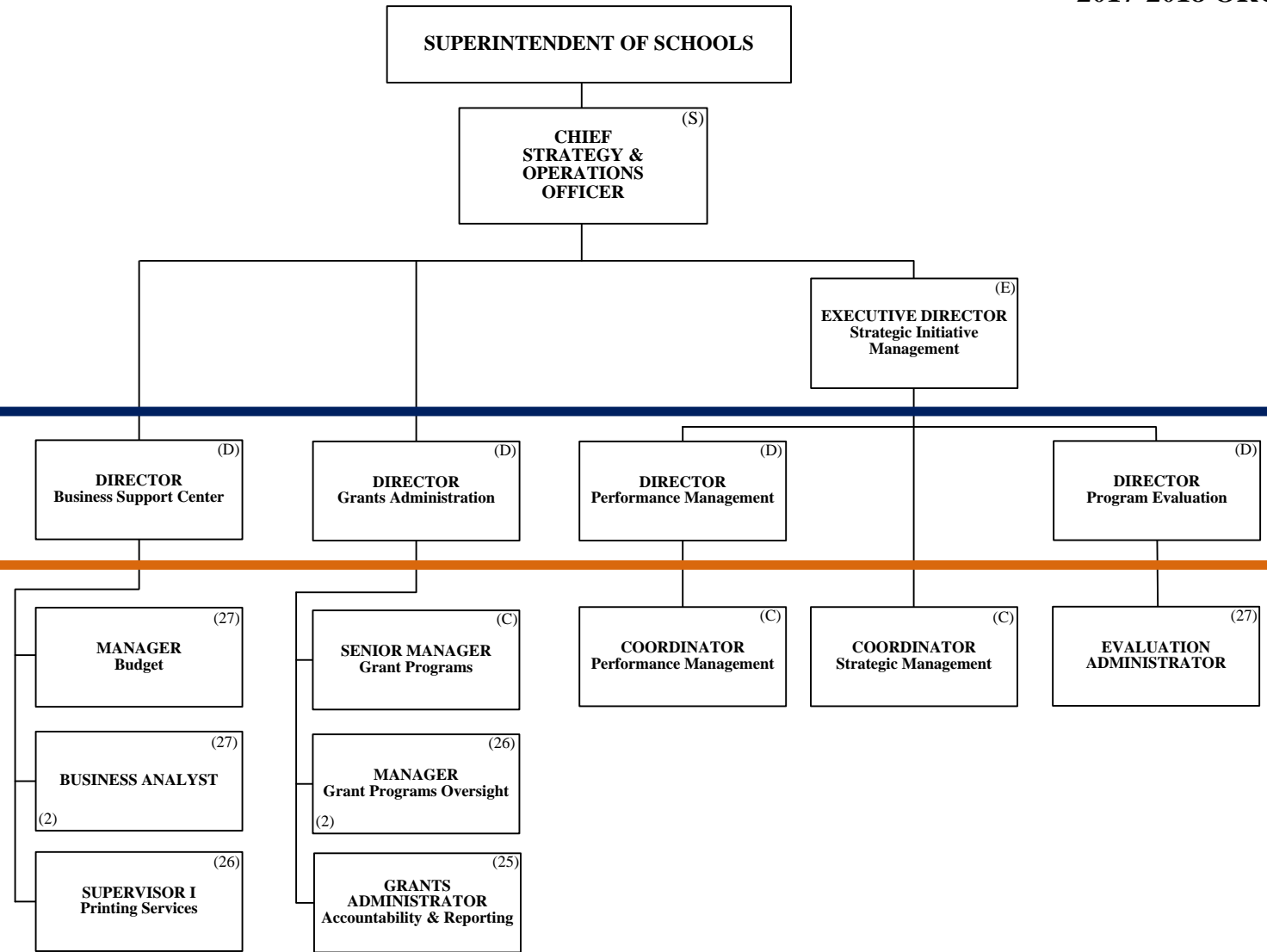
THE SCHOOL BOARD OF BROWARD COUNTY, FLORIDA



THE SCHOOL BOARD OF BROWARD COUNTY, FL
2017-2018 ORGANIZATIONAL CHART

Funding from sources other than General Funds

- C** Capital **FS** Food Service
- G** General **Gr** Grant



PAY BANDS 'S' & 'E'

PAY BAND 'D'

ESMAB PAY BANDS 'C' & 'B'
TSP PAY GRADES 25-28



Funding from sources other than General Funds

C Capital **FS** Food Service
E General **Gr** Grant

STRATEGY & OPERATIONS

THE SCHOOL BOARD OF BROWARD COUNTY, FLORIDA

THE SCHOOL BOARD OF BROWARD COUNTY, FL 2017-2018 ORGANIZATIONAL CHART

SUPERINTENDENT OF SCHOOLS

CHIEF STRATEGY & OPERATIONS OFFICER (S)

PAY BANDS 'S' & 'E'

DIRECTOR (D)
Food & Nutrition Services

DIRECTOR (D)
Procurement & Warehousing Services

DIRECTOR (D)
Student Transportation & Fleet Services

PAY BAND 'D'

ASSISTANT DIRECTOR (C)
Food & Nutrition Services

COORDINATOR (C)
Food & Nutrition Services

MANAGER (C)
Strategic Sourcing

MANAGER (C)
Construction Sourcing

MANAGER (C)
Procurement Compliance

MANAGER (B)
Warehousing Services

ASSISTANT DIRECTOR (C)
Transportation Support Services

MANAGER I (C)
Vehicle Maintenance

MANAGER (C)
Transportation Operations

SUPERVISOR (B)
Resource Computer Training

FINANCE MANAGER (C)
Food & Nutrition Services

PURCHASING AGENT IV (25)

PURCHASING AGENT IV (25)
Construction

SENIOR PROCESS ANALYST (C)

COORDINATOR (26)
Supplier Diversity & Outreach

MANAGER II (C)
Transportation Terminal (2)

ACCOUNTANT V (27)

SUPERVISOR (25)
Vehicle Maintenance

MANAGER (C)
Centralized Routing

AREA SUPERVISOR (B)
Food & Nutrition Services (11)

PROGRAM MANAGER (25)
Nutrition, Education & Training

PROCESS ANALYST (25)
Procurement & Warehousing Services (2)

SUPERVISOR (25)
Special Needs Transportation

MANAGER I (B)
Transportation Terminal (2)

DATA ANALYST (25)
Transportation

AREA SUPERVISOR (B)
Special Programs Food & Nutrition Services (2)

PURCHASING AGENT (25)
Food Service Equipment & Supplies

ESMAB PAY BANDS 'C' & 'B'
TSP PAY GRADES 25-28